

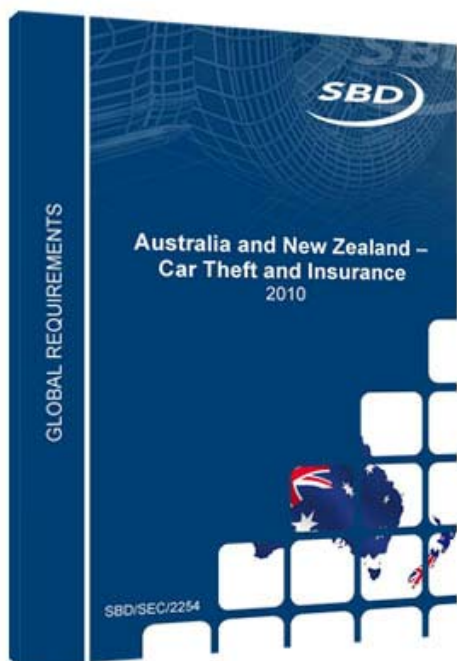
Responding to vehicle theft in Australia and New Zealand



Australia and New Zealand ranked 5th and 3rd highest vehicle theft risk countries out of 20 key global markets...

Australia and New Zealand represent high theft risk markets. The insurance industries in these markets, however, have started taking steps to reduce vehicle theft through public awareness campaigns and discounts for higher security fitment. New Zealand is now starting to follow its Australian counterparts' lead by considering mandatory immobiliser fitment.

With the onset of potential new legislation and as a part of SBD's ongoing reporting on global vehicle theft, this new report explains the insurance criteria, describes future developments in legislation and provides a general overview of the situation related to vehicle theft in Australia and New Zealand.



This report will help you:

- Learn what the Australian and New Zealand **insurance industry's response** is to theft rates
- **Plan vehicle security specifications** for these markets
- Offer security systems which are compliant with **latest legislation and insurance criteria**
- Understand how **current activities within government and insurance** will have an impact on the future requirements for these markets

For additional information please email jappleby@sbd.co.uk or telephone Juanita on +44 (0) 1908 305101 and she will be happy to deal with your enquiry.

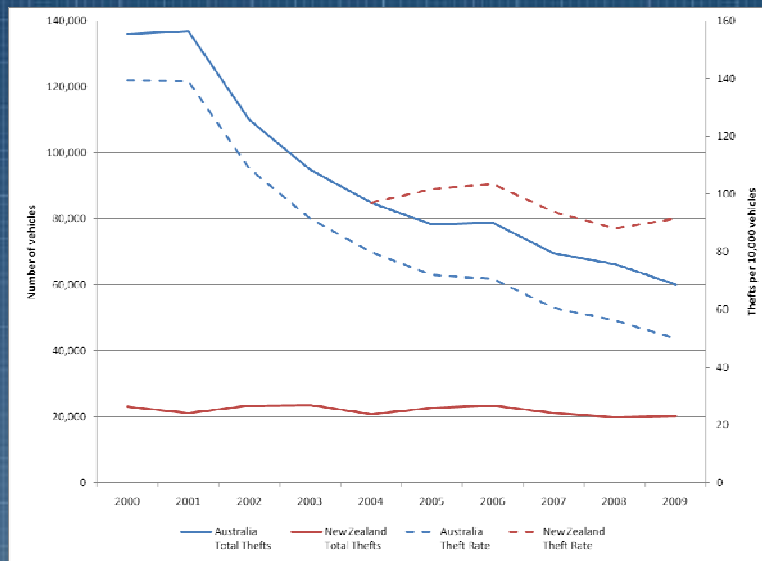


» Differing approaches to tackling vehicle theft...

Australia and New Zealand have two of the highest per capita car ownership rates in the world, however, they also both suffer high rates of vehicle theft. They both take right hand drive vehicles and share a lot of models in common, many of which come from three main brands - Ford, Holden and Toyota. They also share a common set of vehicle security performance criteria developed by the Joint Australia and New Zealand Standards Committee.

Together, they represent a pair of countries where the security features fitted to vehicles are important. However, the two countries have completely different approaches and vastly different theft figures.

A Comparison of Total Vehicle Theft and Theft Rates in Australia and New Zealand



Historically, New Zealand has done little in the way of promoting vehicle security and despite government discussions over the past 2 years they have yet to introduce mandatory immobilisation. The New Zealand market is dominated by a high rate of imported vehicles (60% of vehicles bought for the first time in New Zealand are used imports). As a result, New Zealand has not seen any reduction in theft figures over the past 10 years and continues to suffer a high theft risk.



NMVTRC “Immobilise Now” Poster

In contrast, in Australia, the actions of the National Motor Vehicle Theft Reduction Council (NMVTRC) since 1999 have resulted in declining theft figures, and they have ambitious targets to bring Australian theft down to the level of Japan, one of the world’s lowest risk markets. They introduced mandatory immobilisation in 2001 and publish an annual plan which will concentrate on targeting profit motivated theft over the next few years.

The legal discussions in New Zealand and the ongoing actions of the NMVTRC mean that there are likely to be future changes to vehicle security requirements in these countries.

»» ...know what tomorrow brings

TABLE OF CONTENTS

- 1. Executive summary**
 - 1.1 Introduction
 - 1.2 Conclusions
 - 1.3 Overview
 - 1.4 Current situation
 - 1.5 Future changes
- 2. Australia - Market Overview**
 - 2.1 Market situation
 - 2.2 Car theft data
 - 2.3 Theft reduction strategies
- 3. Australia - Insurance System**
 - 3.1 Insurance Association
 - 3.2 Types of insurance offered
 - 3.3 Risk classification
 - 3.4 Vehicle security assessment
- 4. New Zealand - Market Overview**
 - 4.1 Market situation
 - 4.2 Car theft data
 - 4.3 Theft reduction strategies
- 5. New Zealand - Insurance System**
 - 5.1 Insurance Association
 - 5.2 Types of insurance offered
 - 5.3 Risk classification
 - 5.4 Vehicle security assessment
- 6. Joint Australia and New Zealand Standards Committee**
 - 6.1 AS/NZS 4601 - Standard for vehicle immobilisers
 - 6.2 AS/NZS 3749 - Standard for vehicle intruder alarms
- 7. Future Developments**
 - 7.1 Australia
 - 7.1.1 NMVTRC annual strategic plans
 - 7.2 New Zealand
 - 7.2.1 Mandatory immobilisers
 - 7.2.2 Compulsory third party property insurance

LIST OF FIGURES

- Fig. 1 A comparison of total vehicle theft and theft rates in Australia and New Zealand
- Fig. 2 Types of insurance in Australia and New Zealand
- Fig. 3 Map of Australia
- Fig. 4 Australia new passenger car sales
- Fig. 5 2009 Australia new passenger car sales (by manufacturer)
- Fig. 6 Most popular models in Australia (by new car sales in 2009)
- Fig. 7 Total motor vehicle theft in Australia
- Fig. 8 Motor vehicle theft rates in Australia (by region)
- Fig. 9 Rising vehicle theft in the Northern Territory and the ACT
- Fig. 10 2008/09 Motor vehicle theft rates by year of registration
- Fig. 11 Motor vehicle theft rate in Australia by immobiliser fitment
- Fig. 12 "Most at Risk" vehicles in 2008/09
- Fig. 13 Percentage of insurance claims by anti-theft device fitment
- Fig. 14 Percentage change in the recovery rate of stolen vehicles, 2000-2009
- Fig. 15 Top 10 profit-motivated theft targets, 2007 to 2009
- Fig. 16 NMVTRC "Immobilise Now" posters
- Fig. 17 RCAR New vehicle theft resistance assessment scoring
- Fig. 18 Regions of New Zealand
- Fig. 19 New passenger car sales in New Zealand
- Fig. 20 New Zealand annual new vehicle sales versus used imports
- Fig. 21 2009 New Zealand new passenger car sales (by manufacturer)
- Fig. 22 Most popular models in New Zealand (by new vehicle sales in 2008)
- Fig. 23 Total motor vehicle thefts in New Zealand (by year)
- Fig. 24 New Zealand recovery rate of stolen vehicles
- Fig. 25 2009 Motor vehicle insurance take-up rates in New Zealand
- Fig. 26 NZSA star rating scheme requirements

The SBD Mission...

... to provide our customers with the knowledge, insight and understanding they need to develop class leading Telematics and Vehicle Security products and improved Cost Of Ownership performance

About the report authors...



Chris Vargyas - Vehicle Security Senior Specialist

Chris graduated from the University of Leicester in 2003 with a degree in Mechanical Engineering. He is an expert in vehicle security legislation and insurance requirements. He is responsible for advising a number of our major clients on their insurance approval processes and assuring the security performance for various vehicle ranges and individual security components. Chris is also responsible for monitoring the market for biometric vehicle security systems and keeping all our clients up to date with any new and exciting developments.



Scott Leonard - Vehicle Security Technical Analyst

Scott's experience is in Electronic Engineering with an understanding of power engineering, analogue and digital circuit design, communications, and software engineering. His primary focus at SBD is electronic security within the UK vehicle security team. This also includes monitoring and analysing the impact of global theft statistics as well as maintaining SBD's internal research database on vehicle manufacturers' models, parts and layout information. Scott also plays a key supporting role in SBD's vehicle benchmarking and tear-down activities.

Pricing:

Report	Electronic pdf copy
2254 - Australia and New Zealand Car theft and Insurance	£1600 / €2000/ \$3200

For a quotation or further information please contact Juanita Appleby on:

Email: jappleby@sbd.co.uk

Phone: +44 (0)1908 305 101

Fax: +44 (0)1908 305 106

Related Services



SBD Security Technical Support

In order to react to global market forces and requirements, you need continuous investigation, direct contact with many related organisations and a good understanding of historical trends in vehicle theft and the technical aspect of security system development. All of that equates to significant investment in time and money. But with SBD, the investment is minimised without compromising the benefits.

SBD offer a flexible range of support packages that can be tailored to suit your needs:

- **Monthly reports** to keep you up to date with the latest theft situation in your chosen markets
- **Technical Support Hotline** to answer queries and give advice whenever you need it
- **Expert briefing** meetings on insurance requirements, theft trends and the latest theft methods
- **On-site design support** to ensure designs are optimised and compliant with existing and future requirements



Related Reports



Global theft and insurance requirements research

SBD's research on market needs, insurance requirements and theft trends over a wide range of global markets. These detailed reports focus on the specific information in each country that is needed to meet the market requirements and help reduce the theft risk of vehicles.

Countries available:

- Australia / New Zealand
- Belgium
- Brazil
- China
- Europe
- India
- Japan
- Malaysia
- North America (United States and Canada)
- Russia
- Sweden
- United Kingdom

